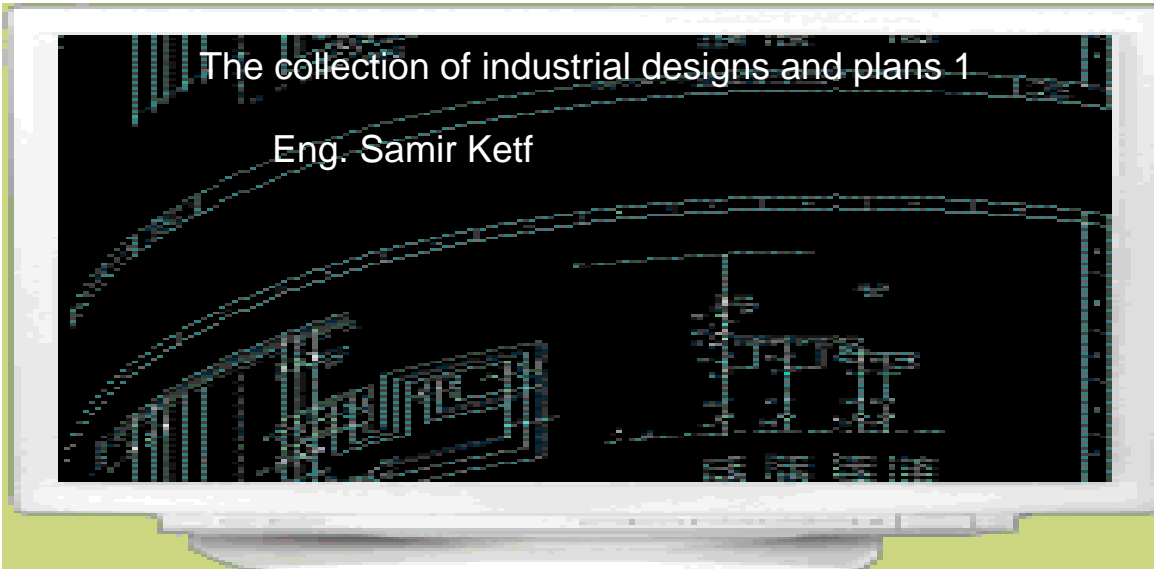


The collection of industrial designs and plans 1

Eng. Samir Ketf



In the name of God

The collection of Industrial designs and plans by me, Samir Ketf has done in 2006-2007. In that time I was educating in Electro technic branch in the city of Karaj, Alborz Province,Iran, Technical and vocational education on crossroad Talghani. On that time Electro technic planning education that was include the control and command's circuit and winding the motor, do with hand and Template. I was the first who have drawn the designs with computer and software. And have got these soft wares and have taught them to enthusiasts. My classmates and professors are my witnesses on this claim.

My classmates: Mohsen Khodabandeh- Mahdi Karami(thanks for drawing some of designs in this collection) - Alireza Hizaji(thanks for drawing some of designs in this collection)- Bahador Jalali - etc.

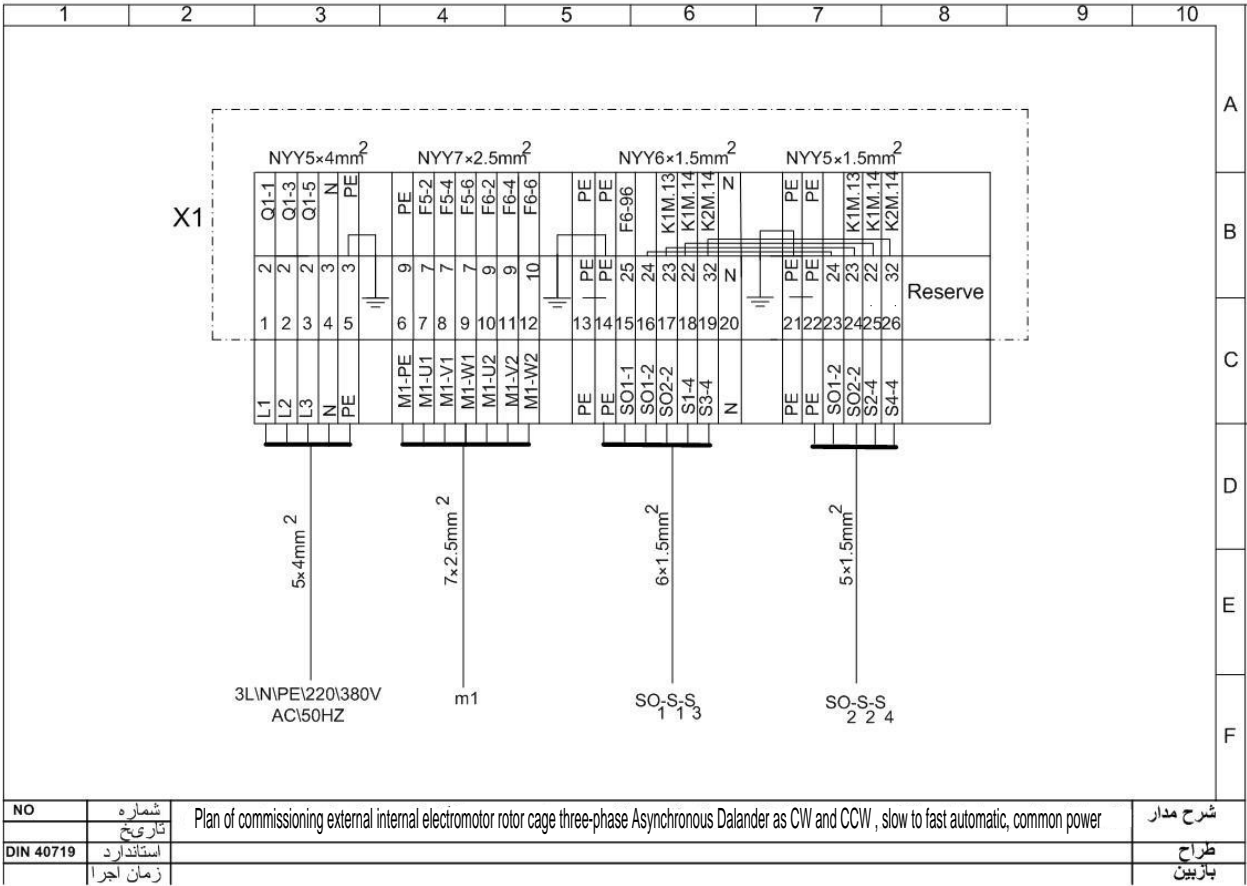
Professors: Mr. Ahrabi- Mr. Haqiqi- Mr. Mosaferi - etc.

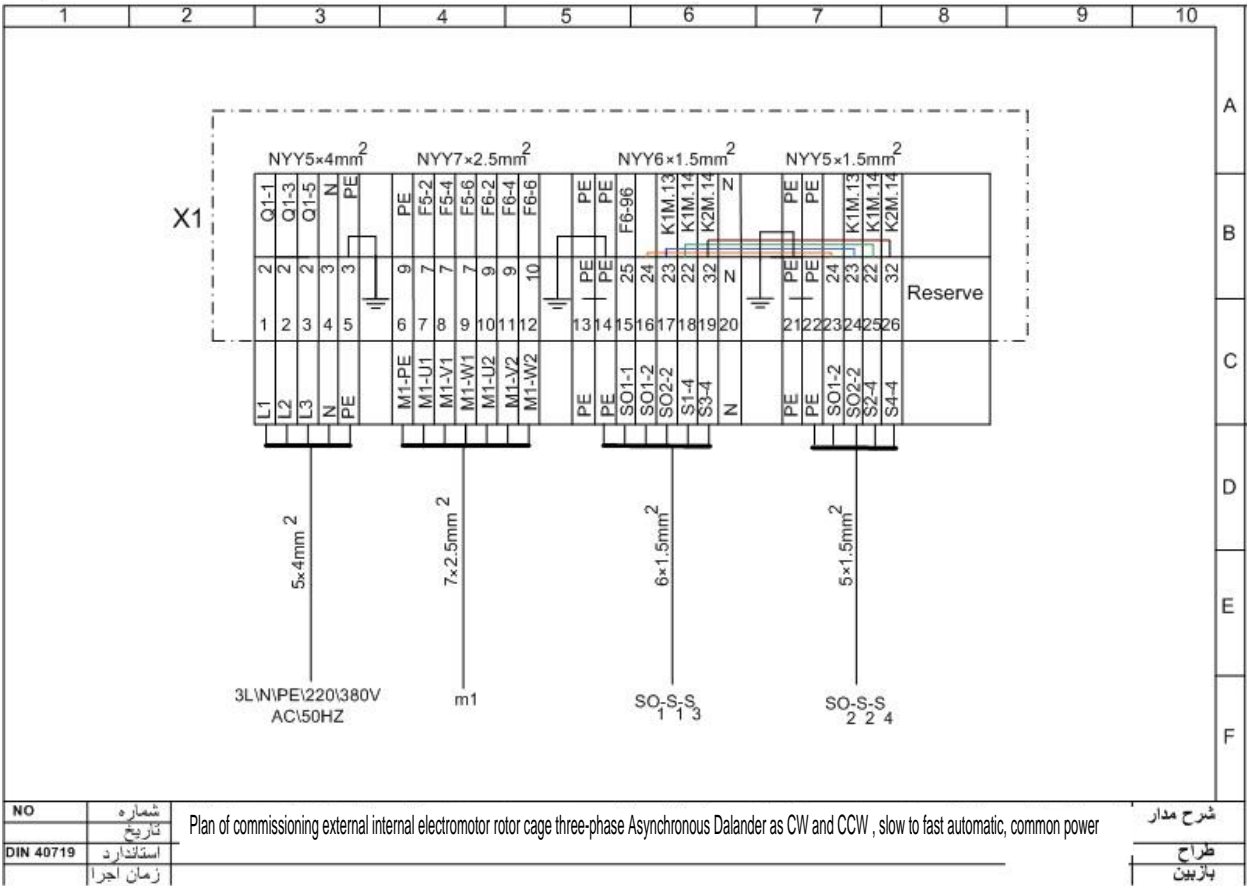
Since that time my designs uploaded in many sites, and then i decided to collect these designs and perform in many collections.

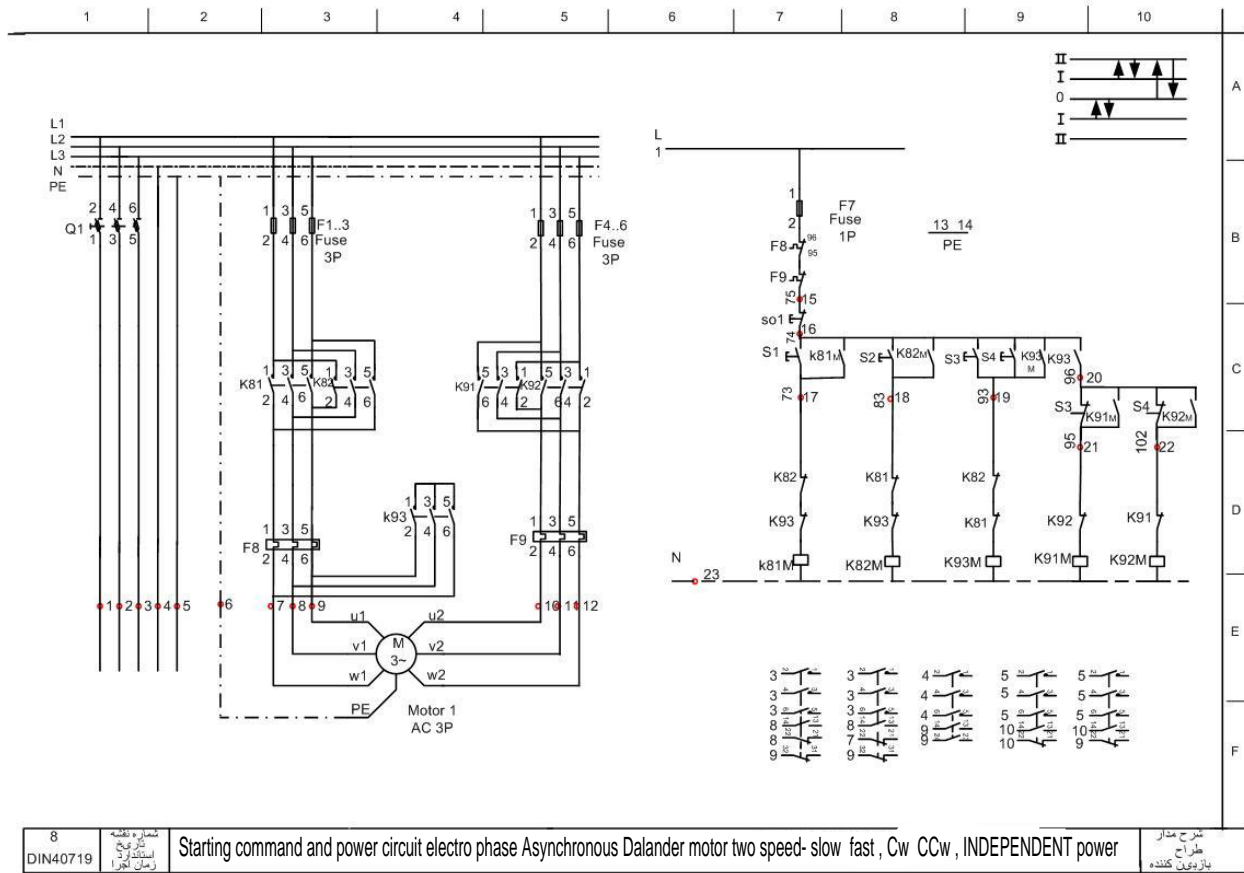
I call this one: The collection of industrial designs and plans 1.

Samir Ketf

2010







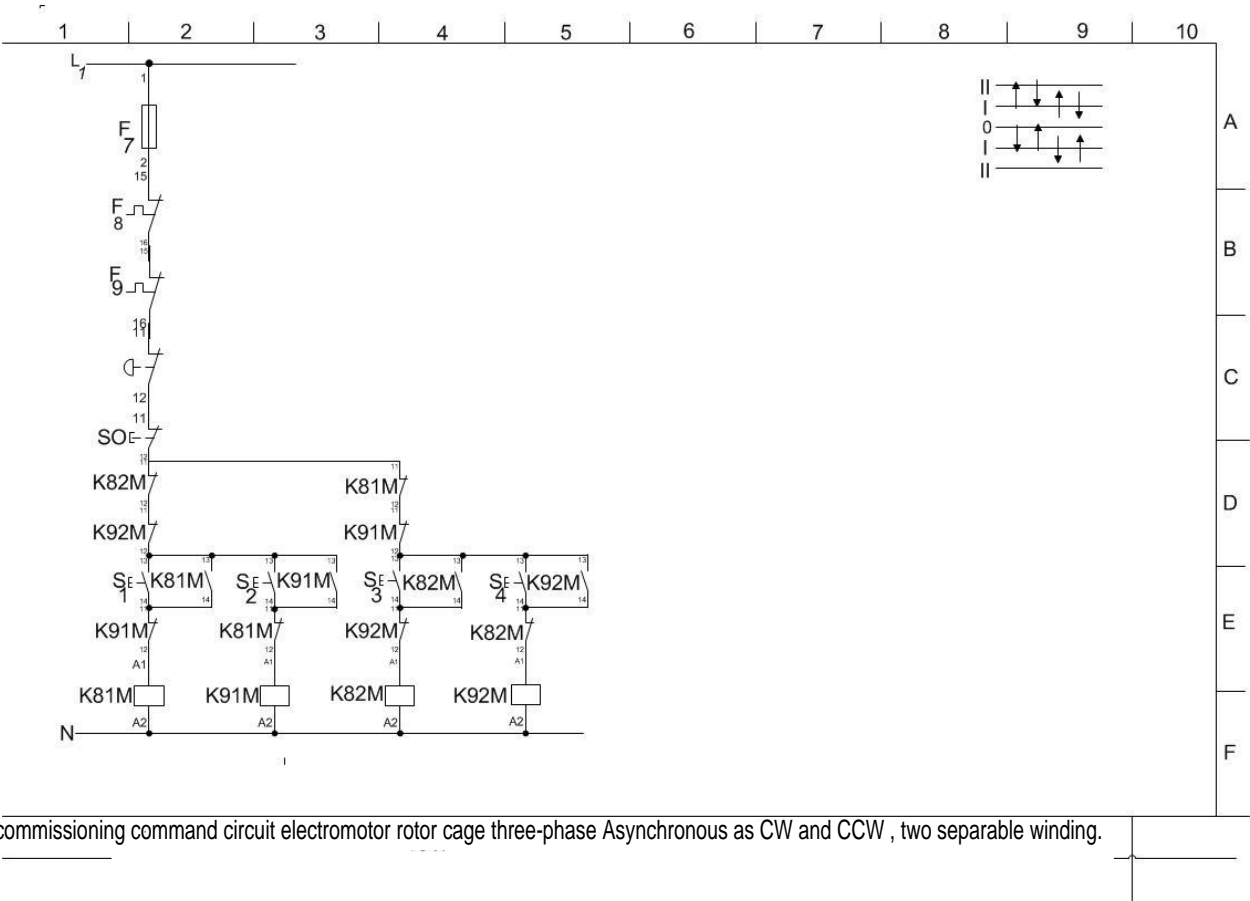
8
DIN40719

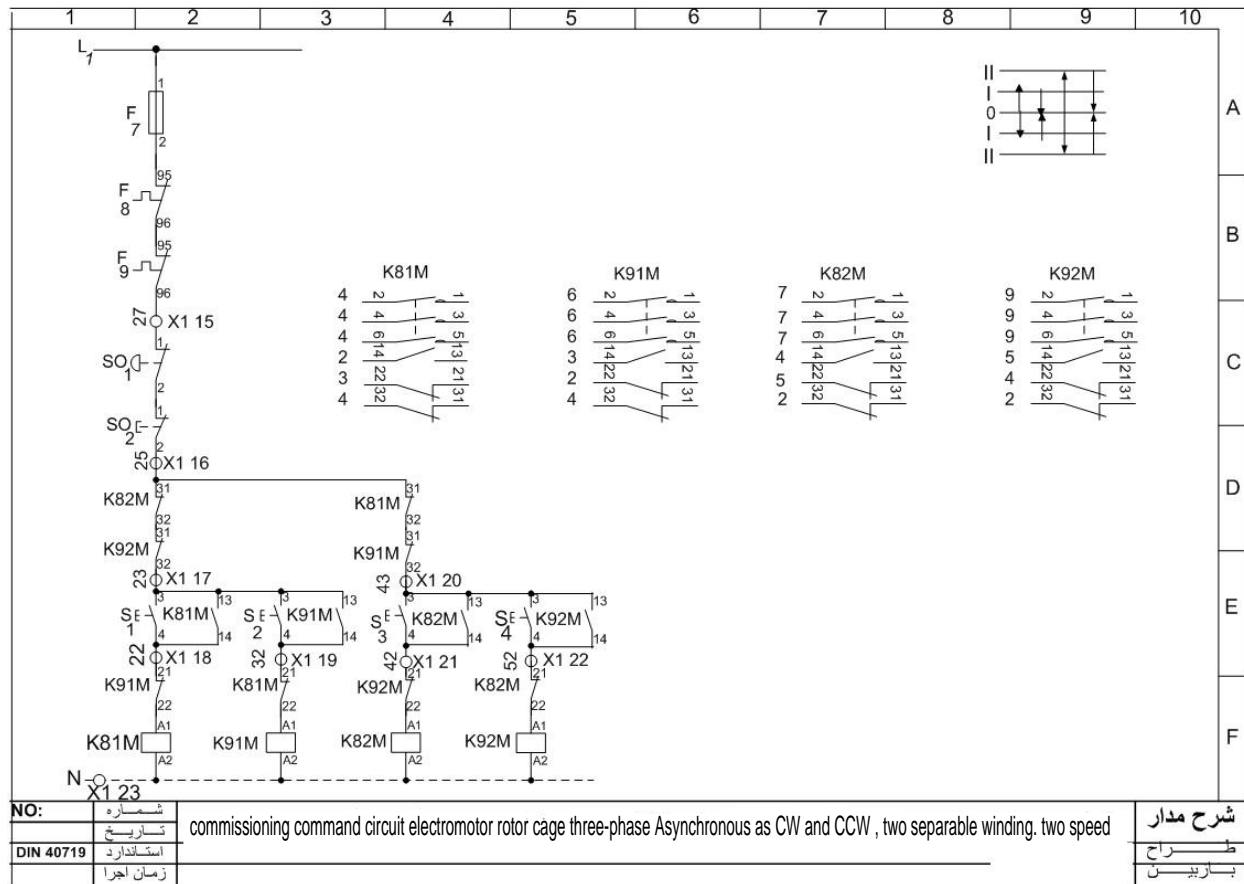
شماره نقشه
تاریخ
ایستگاه
زمان اجرا

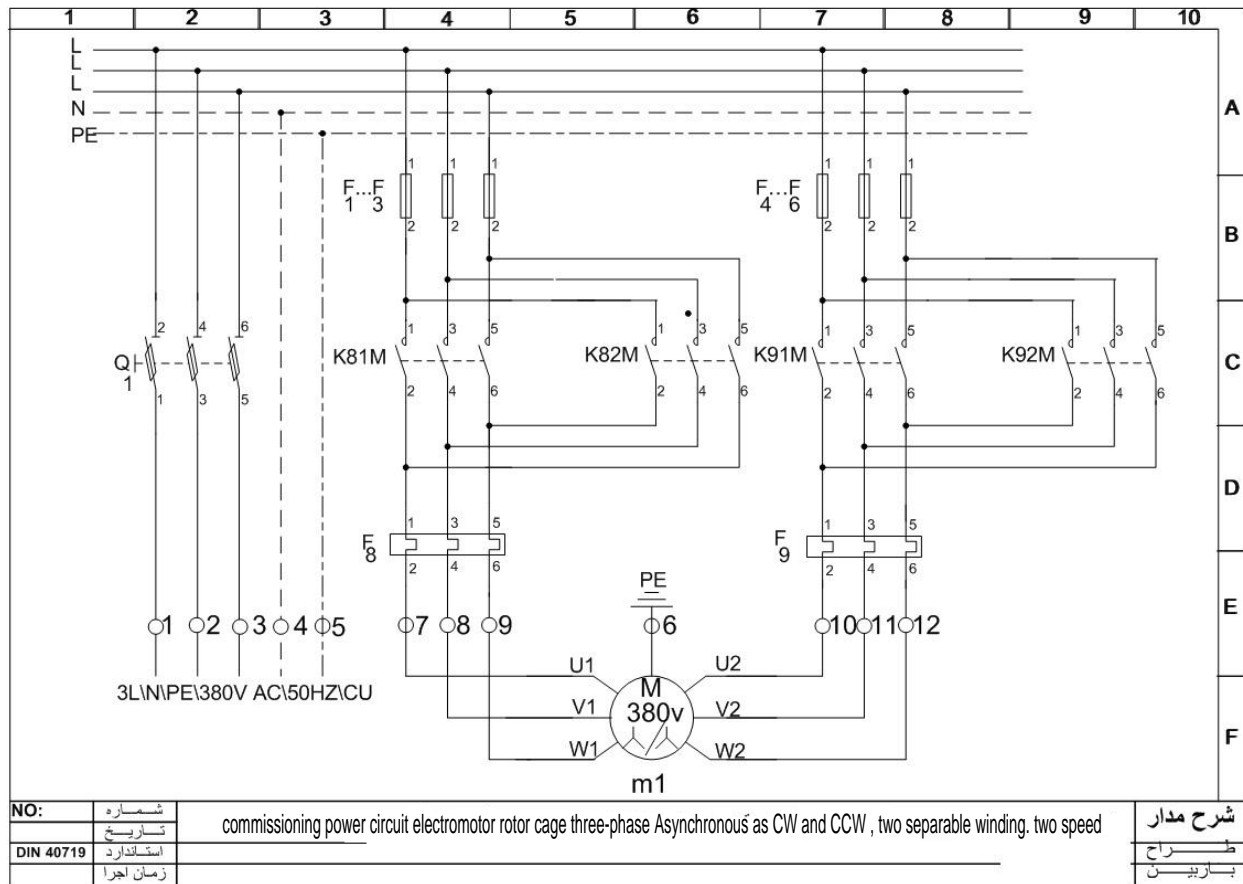
Starting command and power circuit electro phase Asynchronous Dalander motor two speed- slow fast , Cw CCw , INDEPENDENT power

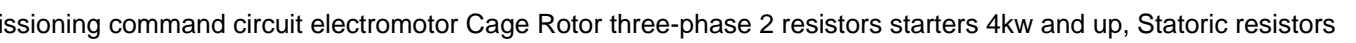
شرح مدار
طراح
بازبین کننده

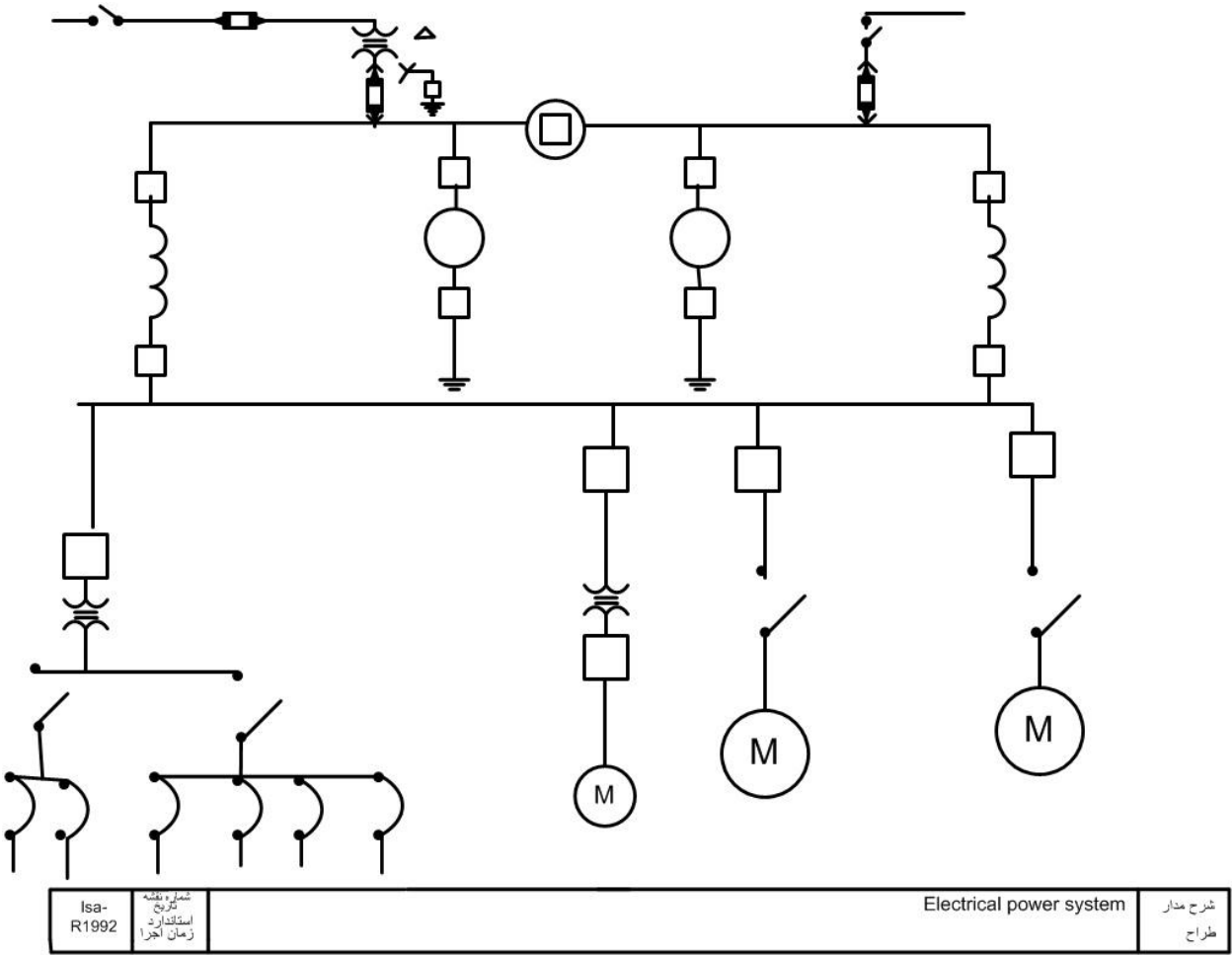


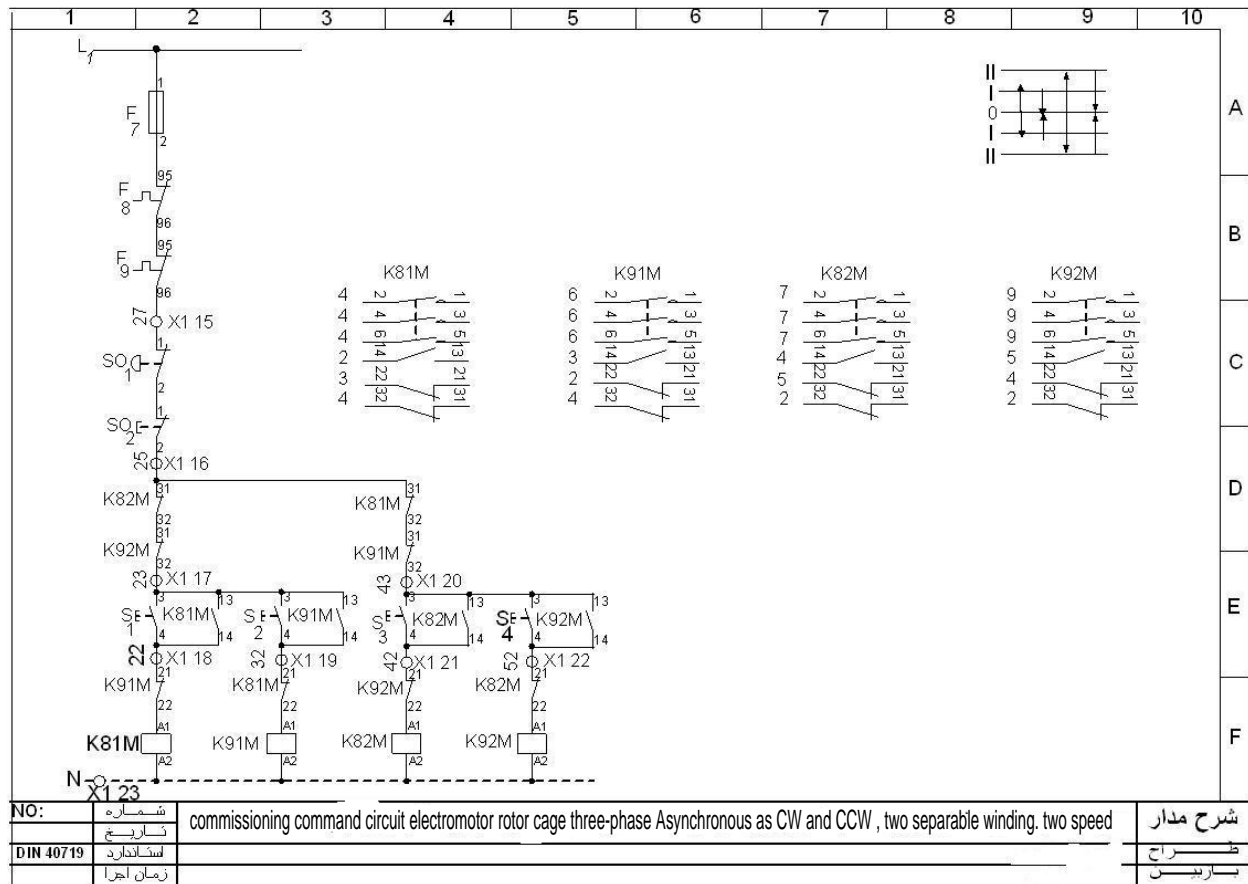


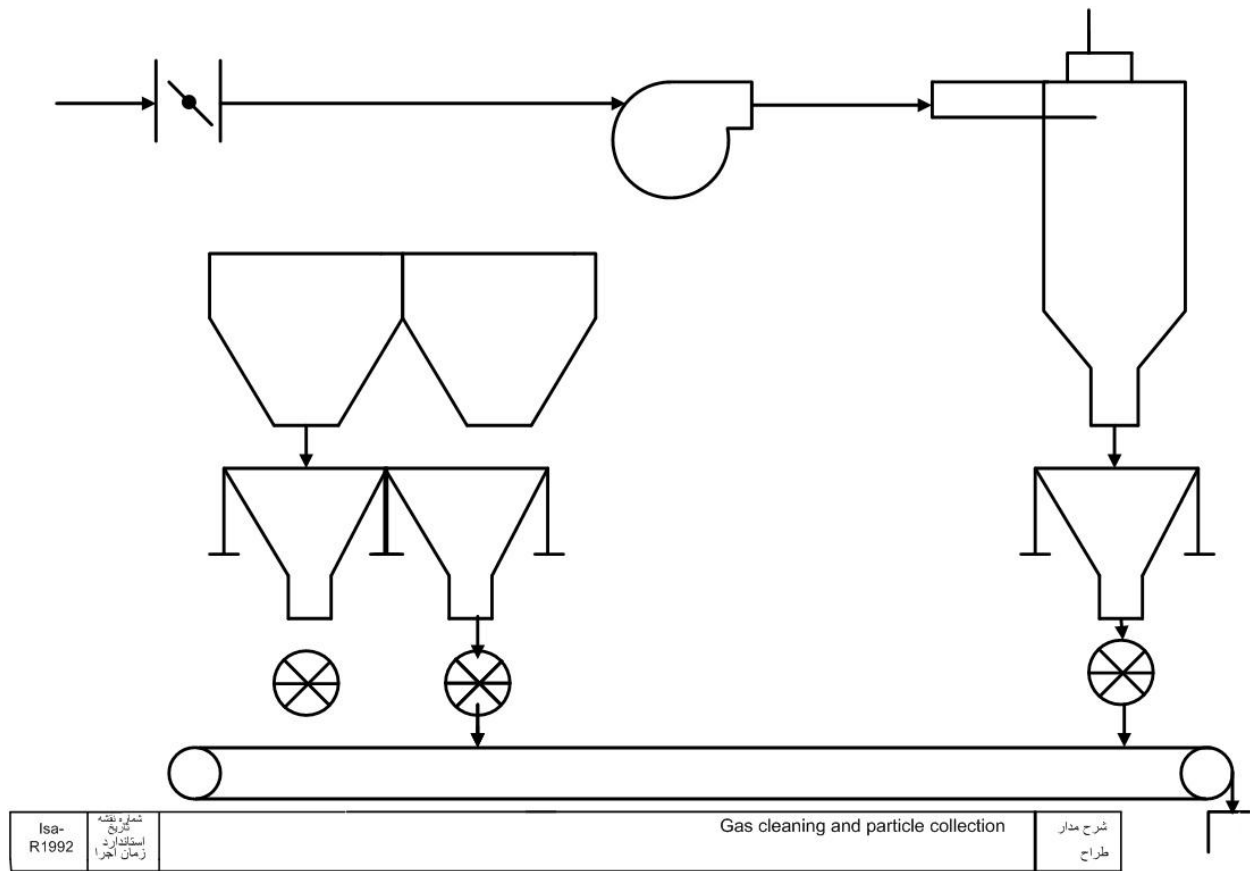


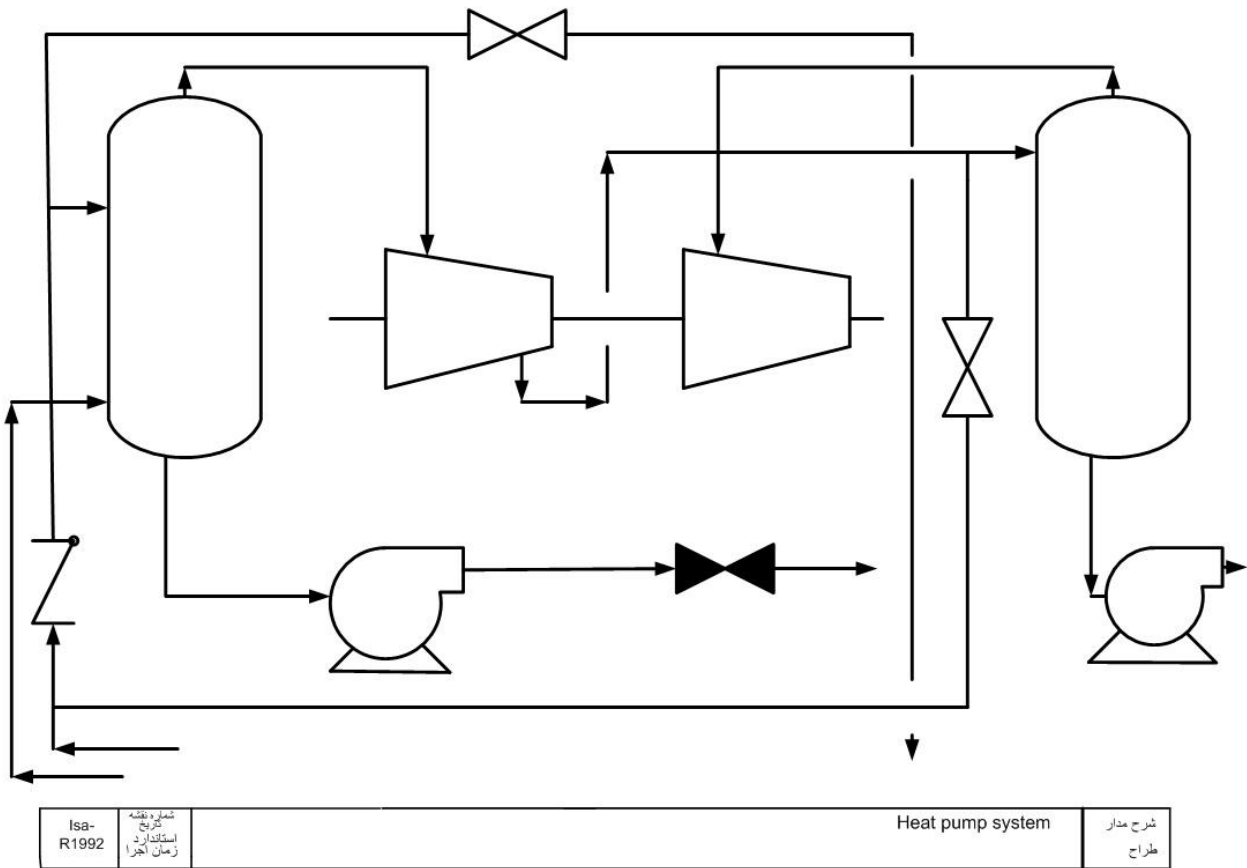


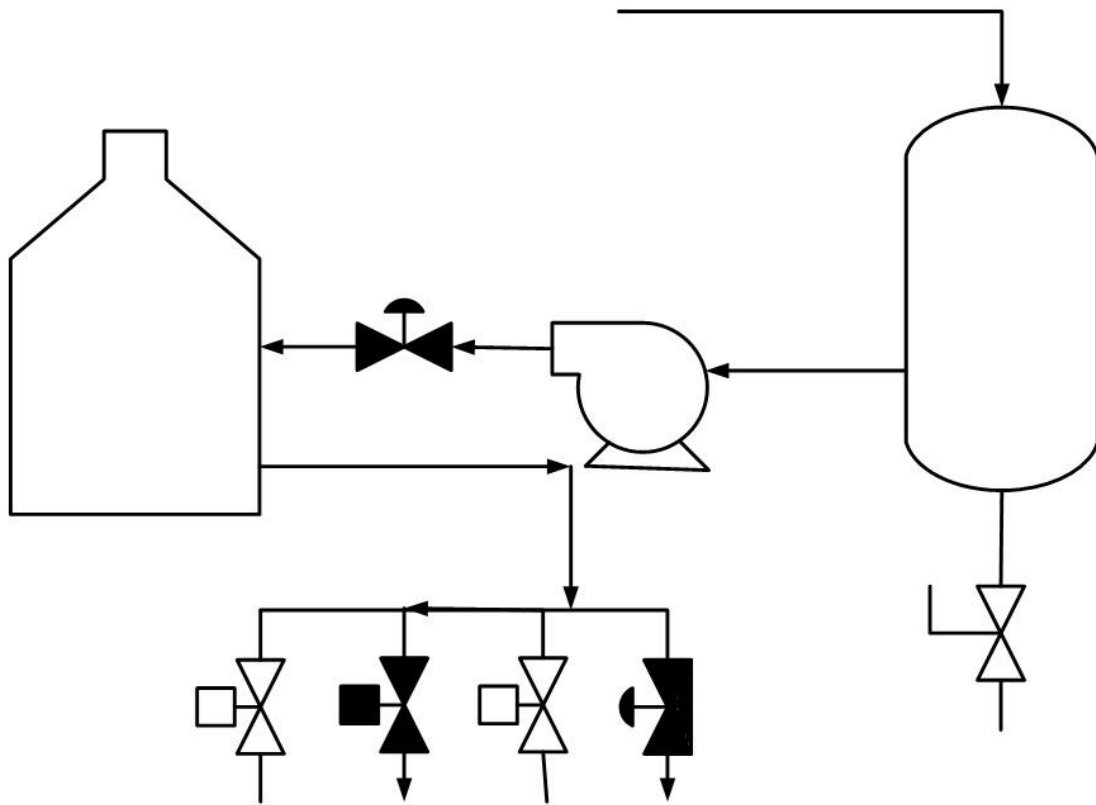




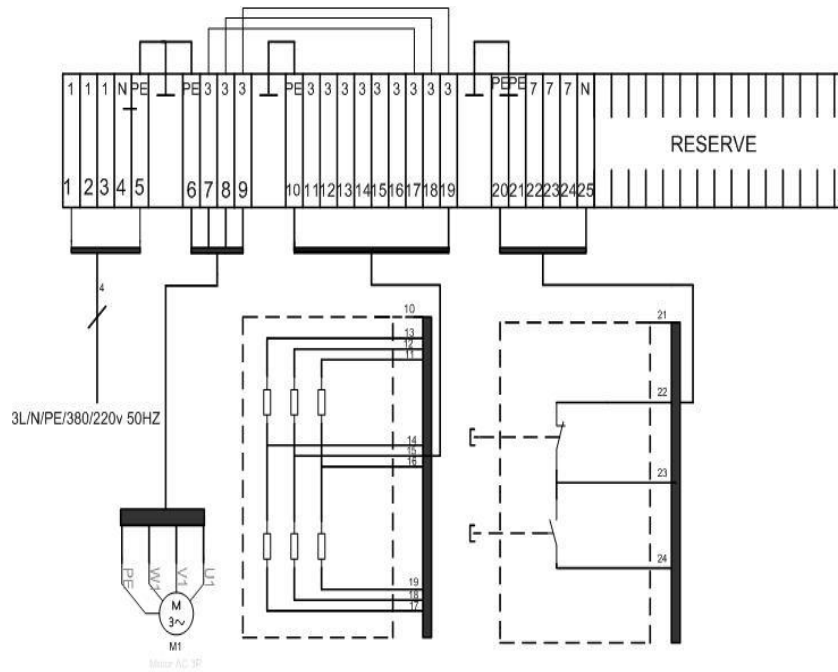




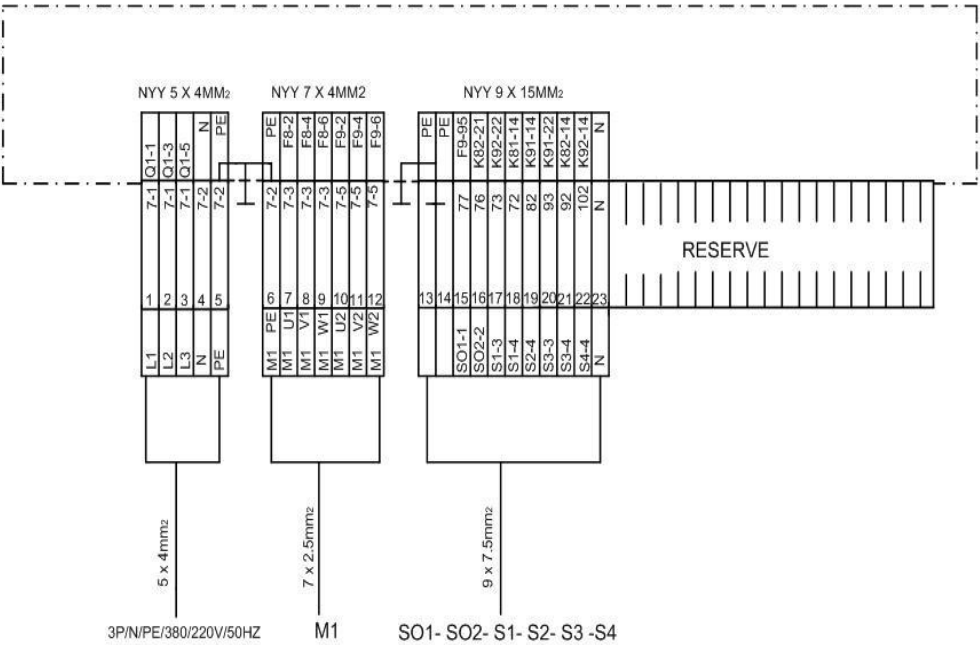




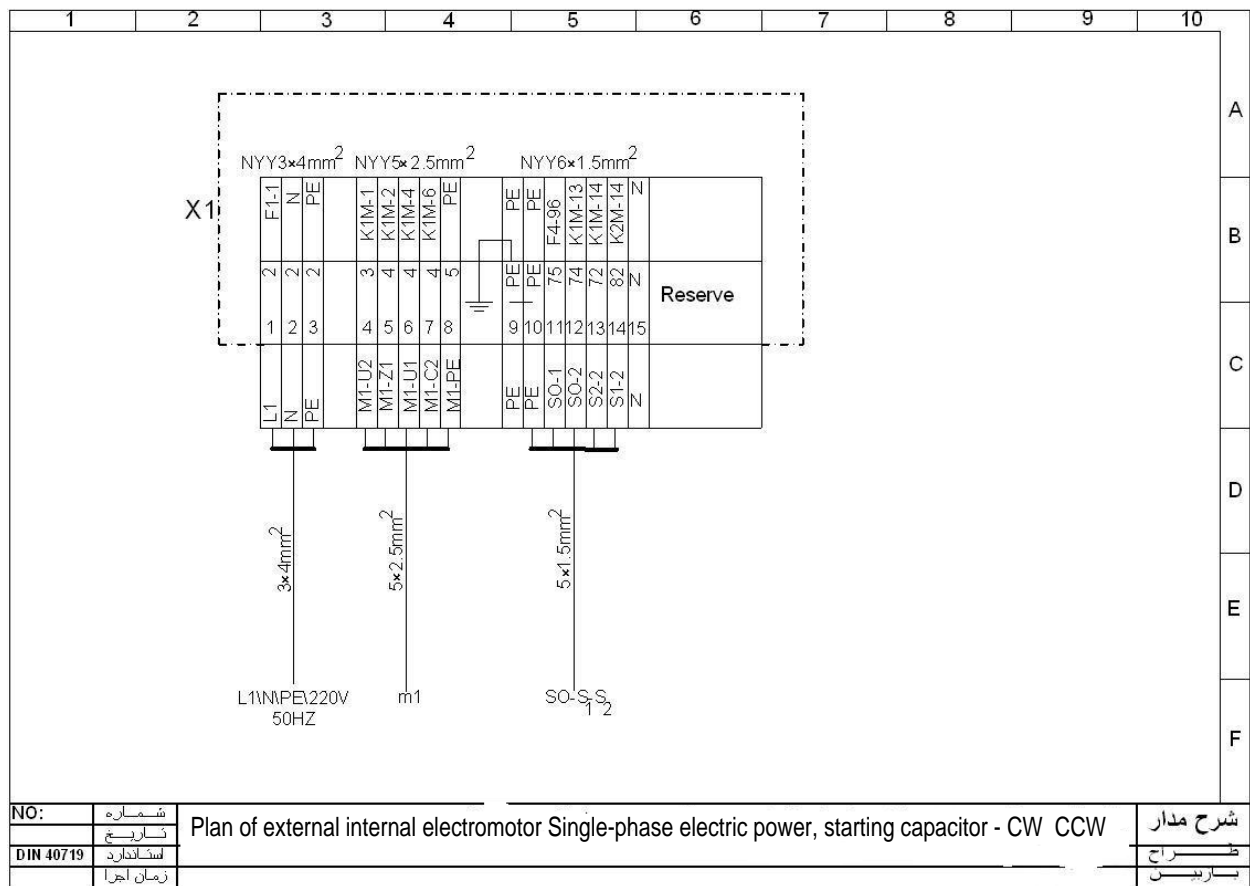
Isa- R1992	شماره نقشه تاریخ استاندارد زمان اجرا		Hot oil system	شرح مدار طراح
---------------	---	--	----------------	------------------



9 DIN40719	شماره نقشه تاریخ استاندارد زمان اجرا	Plan of commissioning external internal electromotor Squirrel Cage Rotor three-phase 2 resistors starters automatic, Statoric resistors	شرح مدار طراحی پایه یون کننده
---------------	---	---	-------------------------------------



9 DIN40719	شرح مدار توضیح استفاده از زمان اجرا	Plan of commissioning external internal electromotor rotor cage three-phase Asynchronous as CW and CCW , two separable winding.	شرح مدار توضیح
---------------	--	---	-------------------



Thank You for previewing this eBook

You can read the full version of this eBook in different formats:

- HTML (Free /Available to everyone)
- PDF / TXT (Available to V.I.P. members. Free Standard members can access up to 5 PDF/TXT eBooks per month each month)
- Epub & Mobipocket (Exclusive to V.I.P. members)

To download this full book, simply select the format you desire below

