

THE ORIGIN OF LIFE

AND

THE TRANSMUTATION OF
THE HUMAN RACE



THE LIGHT IN THE DARK PLACE

The Origin of Life and the Transmutation of the Human Race

Copyright © 2019 The Light in the dark place
Published by *The Light in the dark place* at www.thelightinthedarkplace.gq
Distributed by Smashwords

License Notes:

This free ebook may be copied, distributed, reposted, reprinted and shared,
provided it appears in its entirety without alteration,
and the reader is not charged to access it.

TABLE OF CONTENTS

SACRED GEOMETRY ELEMENTS

[THE CIRCLE & VESICA PISCIS](#)

[EQUILATERAL TRIANGLE](#)

[PENTAGON, PENTAGRAM](#)

[HEXAGON](#)

[THE 7 DAYS OF CREATION](#)

[THE SEED, EGG, FLOWER, AND TREE OF LIFE](#)

[THE FRUIT OF LIFE, METATRON'S CUBE](#)

[ABOUT THE AUTHOR](#)

[CONNECT WITH THE LIGHT IN THE DARK PLACE](#)

DIVINE ELEMENTS of sacred geometry



CIRCLE.



VESICA PISCIS.



EQUILATERAL TRIANGLE.



PENTAGON.



PENTAGRAM.



HEXAGON.



THE 7 DAYS OF CREATION.



THE SEED OF LIFE.



THE EGG OF LIFE.



THE FLOWER OF LIFE.



THE TREE OF LIFE.
(SEPHIROT)

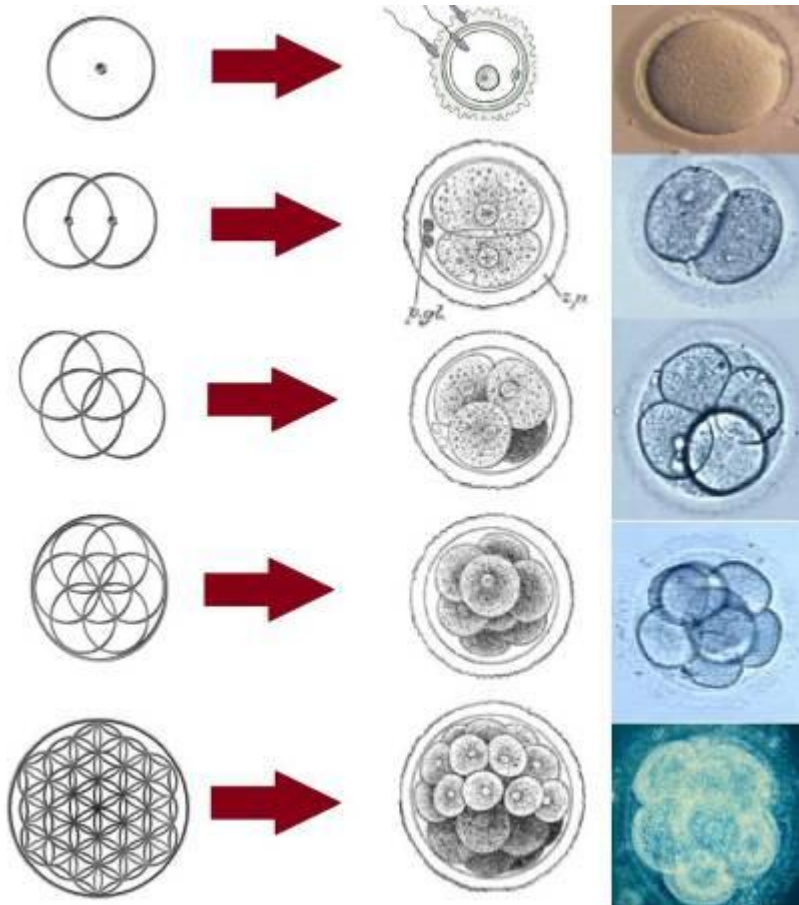


THE FRUIT OF LIFE.



METATRON'S CUBE.

The divine elements of sacred geometry display the geometric patterns of cellular mitosis.

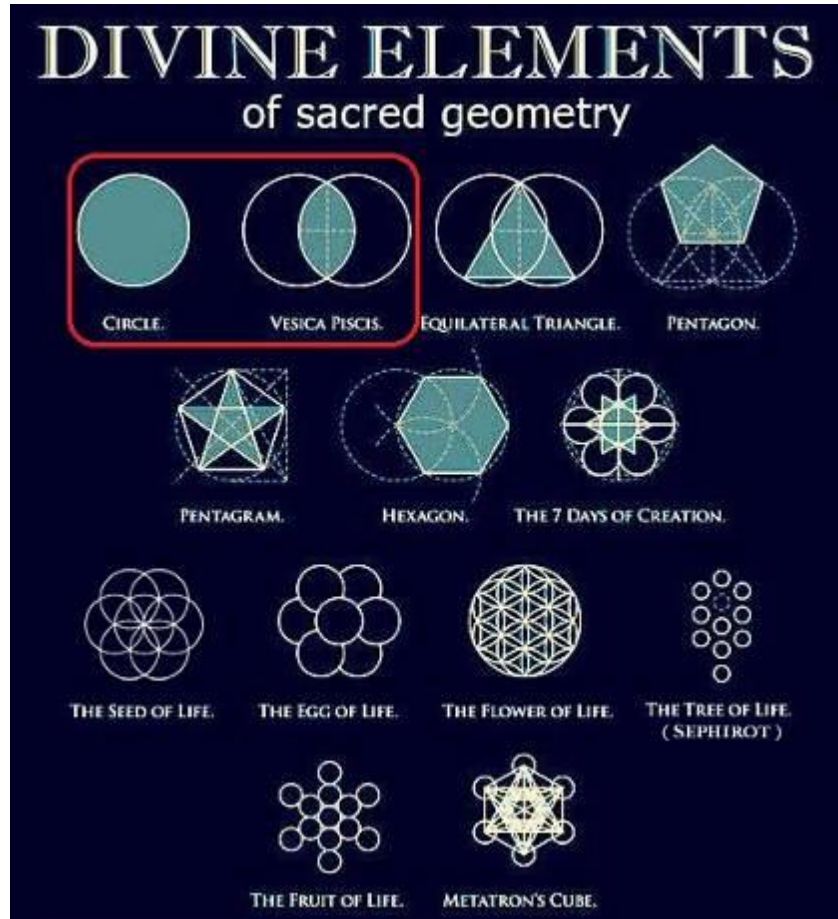


All of the elements of sacred geometry will be explained step by step using physical evidence from the world around us, further exemplifying these properties that portray **the origin and creation of human life**.

The physical evidence that is present in the world around us also coordinates directly to what is ascribed in the Bible and thus it will be our written foundation that affirms the data that finally resolves the origin of human life.

PLEASE NOTE: It may take you a few days or weeks.. but if you slow down from your daily grind and take the time to *thoroughly examine and digest this information*, you will have witnessed the ultimate truth of this spiritual realm we were born into.

THE CIRCLE & VESICA PISCIS



Let's begin with the **circle** of life.

These bright flashes of light mark the incredible moment life begins.



An explosion of **sparks** erupts from the egg when it meets the sperm.

Strong's

H1121

בֶּן

bên

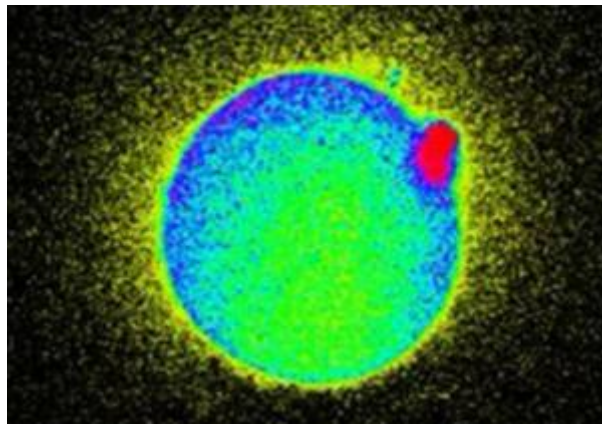
bane

From [H1129](#); a son (as a builder of the family name), in the widest sense (of literal and figurative relationship, including grandson, subject, nation, quality or condition, etc., (like [H1](#), [H251](#), etc.): - + afflicted, age, [Ahoh-] [Ammon-] [Hachmon-] [Lev-]ite, [anoint-]ed one, appointed to, (+) arrow, [Assyr-] [Babylon-] [Egypt-] [Grec-]ian, one born, bough, branch, breed, + (young) bullock, + (young) calf, X came up in, child, colt, X common, X corn, daughter, X of first, + firstborn, foal, + very fruitful, + postage, X in, + kid, + lamb, (+) man, meet, + mighty, + nephew, old, (+) people, + rebel, + robber, X servant born, X soldier, son, + spark, + steward, + stranger, X surely, them of, + tumultuous one, + valiant[-est], whelp, worthy, young (one), youth.


Total KJV occurrences: 4925

H1121
H1122
H1123
H1124
H1125
H1126
H1127
H1128
H1129
H1130
H1131
H1132
H1133
H1134
H1135
H1136
H1137

In the Bible, the word 'child' is the Hebrew word **H1121** בֶּן **bên** and is defined in the Strong's Concordance as a **spark**.



Above is a thermal image of the **spark** of life when the ova of a woman is fertilized by a sperm.

 **sperm**
/spɜːrm/

noun
noun: **sperm**

1. semen.
synonyms: semen, seminal fluid, spermatic fluid, seed, ejaculate, emission; [More](#)

- short for spermatozoon.
plural noun: **sperm**; plural noun: **sperms**
synonyms: semen, seminal fluid, spermatic fluid, seed, ejaculate, emission; [More](#)

Origin

GREEK **GREEK** **LATE LATIN**

speirein → sperma → sperm
to sow seed late Middle English

late Middle English: via late Latin from Greek *sperma* 'seed', from *speirein* 'to sow'.

The English word **sperm** originates via late Latin from Greek *sperma* 'seed', from *speirein* 'to sow'.

Genesis 3 explains how after the serpent beguiled Eve, the LORD God cursed him and put enmity between the **seed** of the serpent and the **seed** of the woman.

Bibles

CGNT | HSB2 | IGNT+ | KJV | **KJV+** | TR+ | Compare | Parallel

Gen 3:14 And the LORD^{H3068} God^{H430} said^{H559} unto^{H413} the serpent,^{H5175} Because^{H3588} thou hast done^{H6213} this,^{H2063} thou^{H859} art cursed^{H779} above all^{H4480} H3605 cattle,^{H929} and above every^{H4480} H3605 beast^{H2416} of the field,^{H7704} upon^{H5921} thy belly^{H1512} shalt thou go,^{H1980} and dust^{H6083} shalt thou eat^{H398} all^{H3605} the days^{H3117} of thy life.^{H2416}

Gen 3:15 And I will put^{H7896} enmity^{H342} between^{H996} thee and the woman,^{H802} and between^{H996} thy seed^{H2233} and her seed;^{H2233} it^{H1931} shall bruise^{H7779} thy head,^{H7218} and thou^{H859} shalt bruise^{H7779} his heel.^{H6119}

Gen 3:16 Unto^{H413} the woman^{H802} he said,^{H559} I will greatly^{H7235} multiply^{H7235} thy sorrow^{H6093} and thy conception;^{H2032} in sorrow^{H6089} thou shalt bring forth^{H3205} children;^{H1121} and thy desire^{H8669} shall be to^{H413} thy husband,^{H376} and he^{H1931} shall rule^{H4910} over thee.

Dictionaries

Strong

H2233

זֵרַע

zera'

zeh'-rah

From **H2232**; **seed**; figuratively **fruit**, **plant**, **sowing time**, **posterity**: - X carnally, **child**, fruitful, seed (-time), sowing-time.

Total KJV occurrences: 229

After reading Genesis 3:15 we have a question for the reader.

Question: Enmity was placed between *whose* seeds?

Answer: Enmity was placed between **the seed of the serpent** and **the seed of the woman**.

The word **seed H2233** means '**child**'.

The enmity was placed between Cain (the child of the serpent, Satan) and Abel (the child of Adam). Enmity means hatred and Cain was the first **child** born on the Earth. Cain was a prime example of hatred as he murdered his brother Abel and then lied about it.



(You can read more about Cain and Abel here: [Satan Impregnated Eve and So Did Adam – Cain and Abel Were Twins!](#)) - But for now, the main takeaway for understanding the data in this article is that every single **child** born on earth starts as a **spark!**

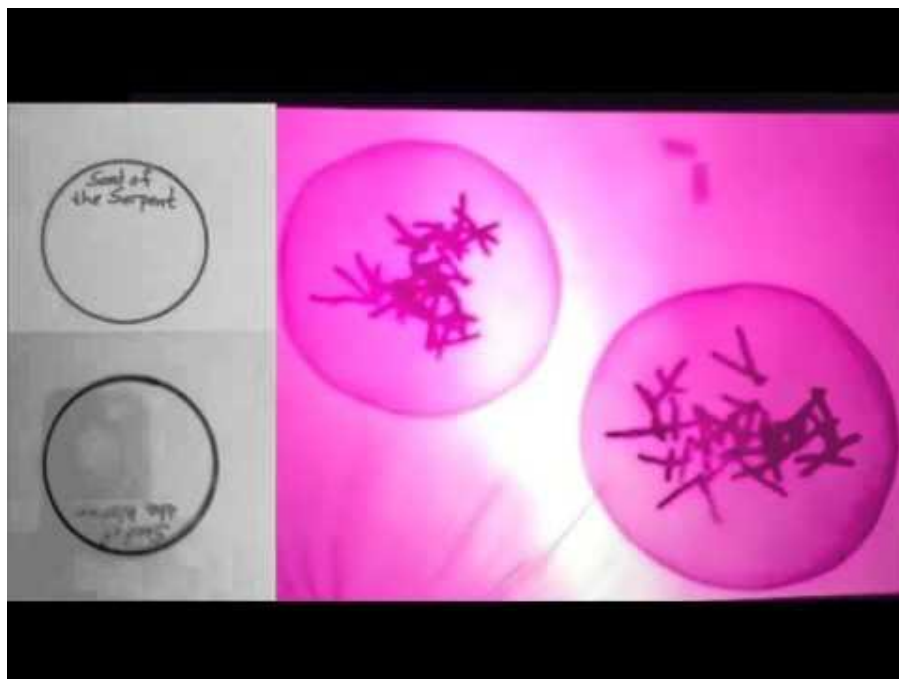
The screenshot shows a software window titled "Strong's" with a toolbar at the top. The main content area displays the entry for H1121. At the top, it says "H1121". Below that, there are some small icons and the text "bên" and "bane". The main body of text describes the word's etymology and usage: "From H1129; a son (as a builder of the family name), in the widest sense (of literal and figurative relationship, including grandson, subject, nation, quality or condition, etc., (like H1, H251, etc.): - + afflicted, age, [Ahoh-] [Ammon-] [Hachmon-] [Lev-]ite, [anoint-]ed one, appointed to, (+) arrow, [Assyr-] [Babylon-] [Egypt-] [Grec-]ian, one born, bough, branch, breed, + (young) bullock, + (young) calf, X came up in, child, colt, X common, X corn, daughter, X of first, + firstborn, foal, + very fruitful, + postage, X in, + kid, + lamb, (+) man, meet, + mighty, + nephew, old, (+) people, + rebel, + robber, X servant born, X soldier, son, + spark, + steward, + stranger, X surely, them of, + tumultuous one, + valiant[-est], whelp, worthy, young (one), youth." At the bottom, it states "Total KJV occurrences: 4925". On the right side, there is a vertical list of Strong's numbers from H1121 to H1137, with H1121 selected.

In Genesis 3:16, the word **children** is **H1121**, which we already defined as 'a child, a son, **spark**'.



We have established that after a sperm (seed) reaches the women's ova, there is a **spark** of life.

The sperm cell then fertilizes the egg which starts to form the male and female **pronuclei** (which appear as two circular membranes).



The **genetic material** that was housed inside the sperm starts to spread out and then the male and female pronuclei move toward each other.



As the genetic material begins to align, the male and female pronuclei form the sacred geometric shape of a **vesica piscis** (two intersecting circles).



This is the origin of the first two cells that continue to develop into a complete human host body.

FEATURED VIDEO: "The Snare" from the very Beginning



<https://www.youtube.com/watch?v=FQagcGgwILA>

Description: This is the Origin of the Prison of the All-seeing Eye the Tree of the Knowledge of Good/livE....WAKE UP!!!! WAKE UP !!!! WAKE UP !!!!

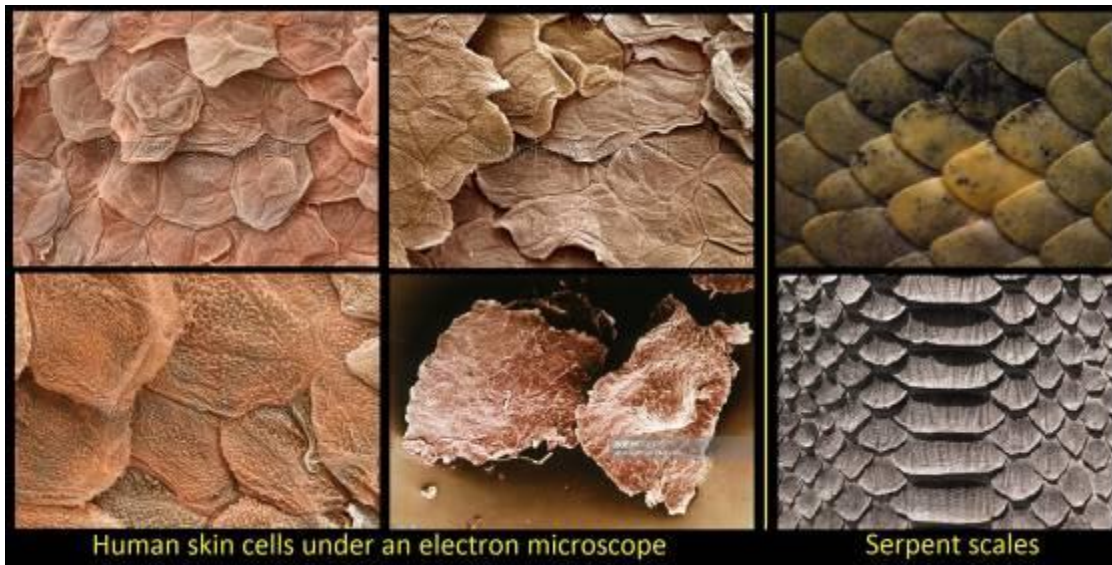


This image shows a bottle of *Mickey Finn's Apple Infused Serpents Bite* liquor that will be used as a pictorial example.

We can clearly see the resemblance of a **sperm** and serpent skin in the foreground of the bottle's label.



Hidden in plain sight on this bottle of liquor is the Biblical truth of the **serpent seed sperm** that created the human flesh body.



Pictured above are **human skin cells magnified under an electron microscope in side by side comparison with the scales of a serpent.**

Modern science shows us the uncanny similarities between human skin and serpent scales.. but how deep does this go?

FEATURED VIDEO: LOOK! At the “Skin/Sin” We’re In!!!



<https://www.youtube.com/watch?v=QzX9IoeXCyQ>

Understanding that all of mankind has the ‘**skin of the serpent**’ was recorded *long ago* in Genesis 3 of the ancient text of *The Targum of Jonathan ben Uzziel*:

THE TARGUM OF JONATHAN BEN UZZIEL,

ON THE

CHAPTER III BOOK OF GENESIS.

And Adam called the name of his wife Hava, because she is the mother of all the children of men. And the Lord God made to Adam and to his wife vestures of honour from the skin of the serpent, which he had cast from him, upon the skin of their flesh, instead of that adornment which had been cast away; and He clothed them.

(THE TARGUM OF JONATHAN BEN UZZIEL, ON THE BOOK OF GENESIS. [Source link](#))

The Targum pre-dates the KJV Holy Bible.

What exactly is **The Targum**?

“The targumim (singular: “**targum**“, Hebrew: תרגום) were spoken paraphrases, explanations and expansions of the Jewish scriptures (also called the Tanakh) that a Rabbi would give in the common language of the listeners, which was then often Aramaic.” (Wikipedia: <https://en.wikipedia.org/wiki/Targum>)

The origin of our flesh stems back to the Garden of Eden when Eve was beguiled by the serpent and all of humanity fell from our spiritual state of being into a carnal system known as **the flesh**.

According to the Bible, **the flesh** is *contrary* to the Spirit of God.

Gal 5:16 This I say^{G3004} then,^{G1161} Walk^{G4043} in the Spirit,^{G4151} and^{G2532} ye shall not^{G3364} fulfil^{G5055} the lust^{G1939} of the flesh.^{G4561}

Gal 5:17 For^{G1063} the^{G3588} flesh^{G4561} lusteth^{G1937} against^{G2596} the^{G3588} Spirit,^{G4151} and^{G1161} the^{G3588} Spirit^{G4151} against^{G2596} the^{G3588} flesh:^{G4561} and^{G1161} these^{G5023} are contrary^{G480} the one to the other:^{G240} so that^{G2443} ye cannot^{G3361} do^{G4160} the things^{G5023} that^{G3739} ye would.^{G2309}

Gal 5:18 But^{G1161} if^{G1487} ye be led^{G71} of the Spirit,^{G4151} ye are^{G2075} not^{G3756} under^{G5259} the law.^{G3551}

Gal 5:19 Now^{G1161} the^{G3588} works^{G2041} of the^{G3588} flesh^{G4561} are^{G2076} manifest,^{G5318} which^{G3748} are^{G2076} these; Adultery,^{G3430} fornication,^{G4202} uncleanness,^{G167} lasciviousness,^{G766}

Gal 5:20 Idolatry,^{G1495} witchcraft,^{G5331} hatred,^{G2189} variance,^{G2054} emulations,^{G2205} wrath,^{G2372} strife,^{G2052} seditions,^{G1370} heresies,^{G139}

Gal 5:21 Envyings,^{G5355} murders,^{G5408} drunkenness,^{G3178} revellings,^{G2970} and^{G2532} such^{G5125} like:^{G3664} of the which^{G3739} I tell you before,^{G4302} as^{G2531} I have also^{G2532} told^{G2532} you in time past,^{G4277} that^{G3754} they which do^{G4238} such things^{G5108} shall not^{G3756} inherit^{G2816} the kingdom^{G932} of God.^{G2316}

We understand from Galatians 5 that all of the evil deeds of **adultery, fornication, uncleanness, lasciviousness, idolatry, witchcraft, hatred, variance, emulations, wrath, strife, seditions, heresies, envyings, murders, drunkenness, revellings, and such like** come from **the flesh** and those that do such things shall not inherit the kingdom of God.

FEATURED VIDEO: Your Flesh "IS" the Devil



<https://www.youtube.com/watch?v=VmIM7FCC3fk>

What exactly is **the flesh**?

Strong's Concordance entry for G4561. The entry shows the Greek word σάρξ (sarx) and its definition: "Probably from the base of G4563; flesh (as stripped of the skin), that is, (strictly) the meat of an animal (as food), or (by extension) the body (as opposed to the soul (or spirit), or as the symbol of what is external, or as the means of kindred, or (by implication) human nature (with its frailties (physically or morally) and passions), or (specifically) a human being (as such): - carnal (-ly, + -ly minded), flesh ([-ly])."

The word '**flesh**' is the Greek word **G4561 σάρξ sarx** and is defined in the Strong's Concordance as **the body (as opposed to the soul (or spirit)).. a human being.**

What exactly is **the spirit**?

Strong's Concordance entry for G4151. The entry shows the Greek word πνεῦμα (pneuma) and its definition: "From G4154; a current of air, that is, breath (blast) or a breeze; by analogy or figuratively a spirit, that is, (human) the rational soul, (by implication) vital principle, mental disposition, etc., or (superhuman) an angel, daemon, or (divine) God, Christ's spirit, the Holy spirit: - ghost, life, spirit (-ual, -ually), mind. Compare G5590. Total KJV occurrences: 385"

The word '**spirit**' is the Greek word **G4151 πνεῦμα pneuma** and is defined in the Strong's Concordance as **a current of air, that is, breath.. that is, (human) the rational soul.**

If all of this evil comes from the flesh, then it would make sense that the flesh was not the LORD God's creation but the creation of the **serpent (Satan)** that broke away from the Lord God.

(In fact, that is the whole mystery of the two accounts of the creation of man in Genesis 1 and Genesis 2. You can read about the mystery that has been resolved here: [The LORD God vs. God, Two Creations of Man – Genesis Mystery Finally Solved!](#)).

Here is a fun fact: Did you know that the largest church in the world that happens to be the headquarters of Christianity is the Vatican and it was built to resemble a **serpent** wearing a crown?



The eye of the serpent.

Down here on the other side of the street is a side walk that's a split tongue.



There is the eye of the serpent.

There's the mouth of the serpent rite here.

We can clearly identify all of the characteristics of a **serpent**.



Looking at an aerial view from behind the crown of the Vatican we note that there is ***a split sidewalk*** right where the **tongue of the serpent is!**



Another piece of supporting evidence that the Vatican was built to resemble a serpent wearing a crown is in **the origin of its name:**

The word "#Vatican" literally means "Divining Serpent," and is derived from Vatis = Diviner and Can = Serpent. **Vatican** City and St. Peter's Basilica were built on the ancient pagan site called in Latin vaticanus mons or vaticanus collis, which **means** hill or mountain of prophecy.

The word "#Vatican" literally means... - 4biddenknowledge - Facebook
<https://www.facebook.com/.../the-word-vatican-literally-means.../647214448786887/>

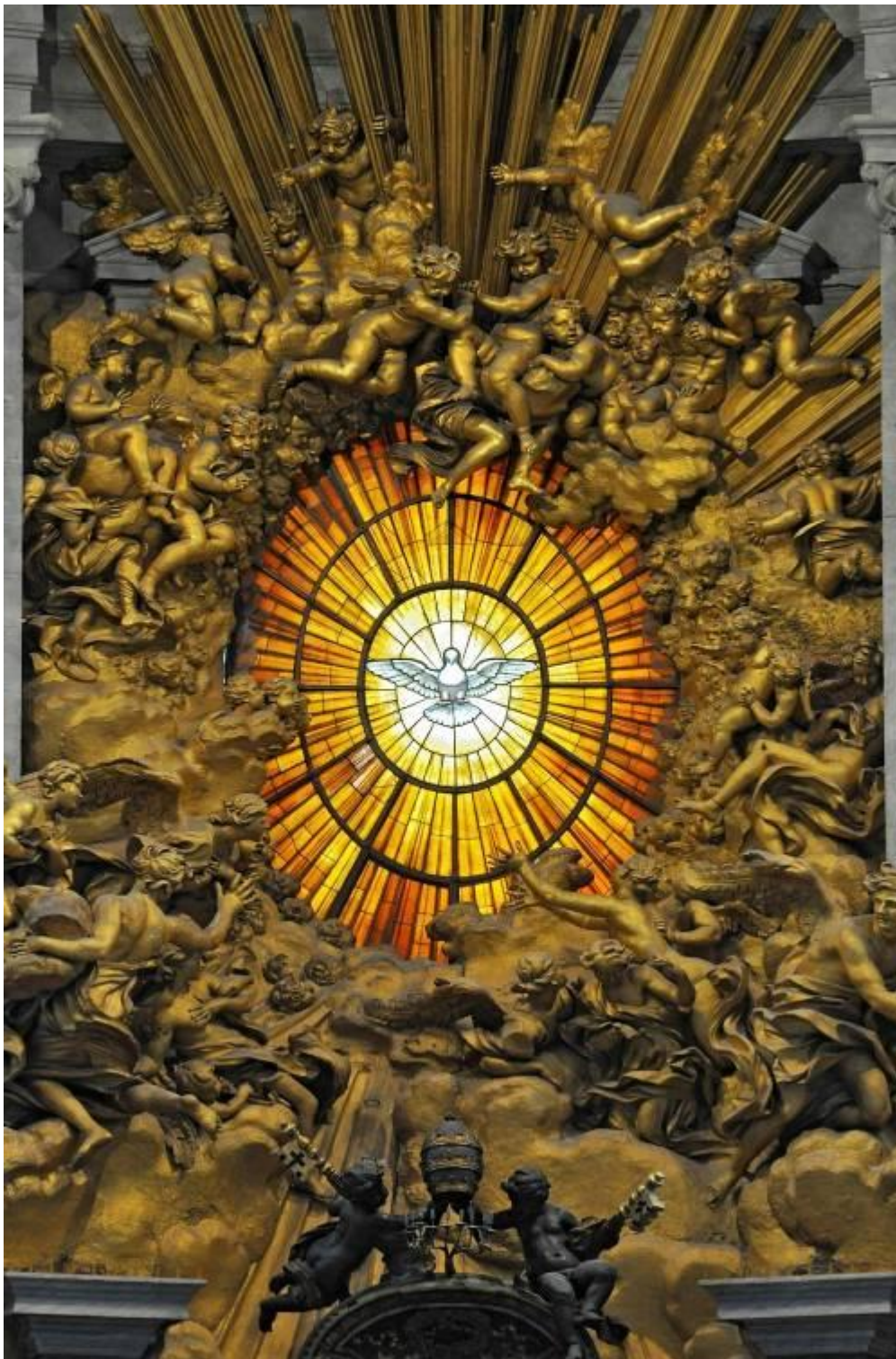
The word 'Vatican' literally means "Divining Serpent".



The Vatican has a **window** right where **the serpent's mouth** is located. (This image depicts the *inside view* of that window).



The largest altar in the world was constructed around this window and it is comprised of **angels falling out of heaven**.



That is very interesting because... the Bible tells us the same thing!

"And the **angels** which kept not their first estate, but left their own habitation, he hath reserved in **everlasting chains** under darkness unto the judgment of the great day." - (*Jude 1:6 KJV Holy Bible*)

Jud 1:6 And^{G5037} the angels^{G32} which kept^{G5083} not^{G3361} their^{G1438} first estate,^{G746} but^{G235} left^{G620} their own^{G2398} habitation,^{G3613} he hath reserved^{G5083} in everlasting^{G126} chains^{G1199} under^{G5259} darkness^{G2217} unto^{G1519} the judgment^{G2920} of the great^{G3173} day.^{G2250}

The word **everlasting** is the Greek word G126 αἰδιος aidios meaning: **everduring (forward and backward)** or forward only): - eternal, everlasting.

The word **chains** is the Greek word G1199 δεσμόν desmon meaning: a band, that is, **ligament (of the body) or shackle (of a prisoner)**; figuratively an impediment or disability: - band, bond, chain, string.

| | | | |
|---|---|---|---|
| <p>G126</p> <p>αἰδιος</p> <p>aidios</p> <p>ah-id'-ee-os</p> <p>From G104; everduring (forward and backward) or forward only): - eternal, everlasting.</p> <p>Total KJV occurrences: 2</p> | <p>G126</p> <p>G127</p> <p>G128</p> <p>G129</p> <p>G130</p> <p>G131</p> <p>G132</p> <p>G133</p> <p>G134</p> <p>G135</p> <p>G136</p> <p>G137</p> <p>G138</p> <p>G139</p> <p>G140</p> <p>G141</p> <p>G142</p> <p>G143</p> <p>G144</p> <p>G145</p> <p>G146</p> <p>G147</p> | <p>G1199</p> <p>δεσμόν, δεσμός</p> <p>desmon desmos</p> <p>des-mon', des-mos'</p> <p>Neuter and masculine respectively from G1210; a band, that is, ligament (of the body) or shackle (of a prisoner); figuratively an impediment or disability: - band, bond, chain, string.</p> <p>Total KJV occurrences: 20</p> | <p>G1178</p> <p>G1179</p> <p>G1180</p> <p>G1181</p> <p>G1182</p> <p>G1183</p> <p>G1184</p> <p>G1185</p> <p>G1186</p> <p>G1187</p> <p>G1188</p> <p>G1189</p> <p>G1190</p> <p>G1191</p> <p>G1192</p> <p>G1193</p> <p>G1194</p> <p>G1195</p> <p>G1196</p> <p>G1197</p> <p>G1198</p> <p>G1199</p> |
|---|---|---|---|

Upon further inspection of the **angels** we can see that most of them have double faces (**forward and backward**) and are falling from heaven into the human reproductive system which begins the process of human life in the womb as **ligaments of the body** are developed and a new angel is held **prisoner, shackled** in the flesh!

You can see some of the (**forward and backward**) faces highlighted in pink:



The altar depicts angels falling from heaven into ligaments of the body which are our human flesh! This altar aligns precisely with Jude 1:6 and proves that our flesh bodies are our shackles, our prisons!

Psalm 82 also states we are all **fallen angels**.

“I have said, **Ye are gods**; and all of you *are* children of the most High. But ye shall die like men, and fall like one of the princes.” (Psalm 82:6-7 KJV Holy Bible)

Thank You for previewing this eBook

You can read the full version of this eBook in different formats:

- HTML (Free /Available to everyone)
- PDF / TXT (Available to V.I.P. members. Free Standard members can access up to 5 PDF/TXT eBooks per month each month)
- Epub & Mobipocket (Exclusive to V.I.P. members)

To download this full book, simply select the format you desire below

